

Provincial Association of Transition Houses and Services of Saskatchewan

Annual Report 2021 - 2022



Board Chair Report

Welcome to the 2022 Annual Report. I am honored to give this report on behalf of the Board of Directors of PATHS. I'd like to begin by thanking the staff and Board of Directors for their ongoing support of PATHS mission; to support and collaborate with member agencies and others to address, prevent and ultimately to eliminate partner and family violence.

During the 2021-2022 Fiscal Year, PATHS was involved in many projects that moved towards the vision of communities that are free from intimate partner and family violence. The success of these projects is due to the incredible work of Jo-Anne and Crystal. On behalf of the Board of Directors, I thank you for your continued passion, drive and resilience. You are the heart of this organization and your compassion for the people we serve is apparent in all you do.

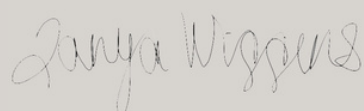
This past year, PATHS continued to promote prevention of Intimate Partner and Family Violence through their ongoing advocacy, delivery of public awareness campaigns, raising awareness of the warning signs and risk factors to IPV as well as where to turn for help.

PATHS staff also worked diligently to offer a realm of trainings for businesses, unions and other organizations to understand the dynamics of Domestic Violence and Intimate Partner violence. They were involved in 27 presentations as well as being featured in 51 media stories! Research is a significant part of the work PATHS does. Congratulations to Crystal on publishing four journal articles this fiscal year!

One of the highlights of the year was the collaboration with the Saskatchewan SPCA and STOPS to Violence. This partnership has been instrumental in raising awareness on The LINK (the link between Pet abuse and Domestic Violence). PATHS and Saskatchewan SPCA launched The Saskatchewan Co-Sheltering Network, bringing together shelters and services interested in increasing the supports available for pet owners who experience violence, including pet-friendly shelters.

I am proud of this year's accomplishments and look forward to the continued success of this incredible organization.

Sincerely,

A handwritten signature in cursive script that reads "Tanya Wiggins".

Tanya Wiggins

Treasurer's Report

After reviewing the draft of the audit, I would like to summarize the highlights of the findings. During our audit, there was not a deficiency identified that met the definition of a significant deficiency.

"In our opinion, except for the possible effects of the matter described in the Basis for Qualified Opinion section of our report, these financial statements present fairly, in all material respects, the financial position of Provincial Association of Transition Houses and Services of Saskatchewan Inc., as of March 31, 2022, and its financial performance and its cash flows for the year then in accordance with Canadian Accounting Standards for Not-for Profit Organizations."

Credit Risk: Credit risk refers to the risk that a counterparty may default on its contractual obligations resulting in a monetary loss. The association's principal financial assets are cash, accrued interest receivable and guaranteed term investments. The association does not have significant exposure to any individual customer and has not incurred any significant bad debts during the year. The association is not exposed to significant interest rates, currency, or credit risks.

Liquidity Risk: Liquidity risk is the risk that the association will not be able to meet a demand for cash or fund its obligations as they come due. Liquidity risk also includes the risk of the association not being able to liquidate assets in a timely manner at a reasonable price.

The association has short Term Investments in the amount of \$61,068 and Long Term Investments of \$60,000 for a total of \$121,068.

The deferred amount of \$240,798 is funds that have been allocated for services not yet performed. This amount must remain available and classified on the organization balance sheet. PATHS will have two Term deposits due to mature in September 2022.

Also, of note is the continuum of excess of revenues over expenses, in the amount of \$56,874. This is still a significant surplus of revenues over expenses. This surplus is directly influenced by the revenues from grants income as well as earned income. The earned income does give the organization a measure of unprecedented financial security going into the fiscal year 2022-23.



Sarah Valli

Executive Director's Report

For the past several years it has felt like we have been cast adrift in a turbulent sea, crashing again and again on the shore as we endure wave after wave of difficult circumstances. COVID 19, the increasingly harmful impacts of climate change, systemic racism, homelessness, addiction and mental illness, poverty and war have become the constant background to our lives, whether we are directly impacted or not.

The realities of our time mean that we all are struggling in some way. For individuals experiencing violence and abuse, just getting through the day can seem like an impossible task. The weight of our times becomes an additional burden to bear. For PATHS member agencies, the shelters and services who are dedicated to helping others, it has been a challenging time. Calls for service have increased exponentially for some. Almost all are reporting more severe violence and more complex cases. The staff have been offering their help and hope, compassion and encouragement to the individuals they serve, often when they themselves are burdened by the weight of our times. They are deserving of the utmost respect and I would like to express my thanks to each and everyone of them.

For us at PATHS, it has been a busy time as we work to implement the strategic goals of our organization. These include prevention of intimate partner and family violence through raising awareness of the dynamics of IPV in the general public and among professionals, diversification of funders to increase financial stability, and providing education and training to our member agencies. We have participated in and conducted research, and, through our research efforts added to the body of knowledge on the experiences of victims and survivors. We have nurtured partnerships with Indigenous communities and with other organizations that work to address violence and abuse.

I would like to express my thanks to the funders and donors who make our work possible, to my colleague Crystal Giesbrecht for her unwavering commitment to our goals and to PATHS' Board of Directors for their guidance in the past year. All of us, like pebbles tossed in the surf, have been impacted by these chaotic times. Some have broken against the shore, sharp edges exposed. Others have softened, rough edges ground down over time. My wish for the coming years is that the waters calm and that trials of these times makes us stronger and more resilient for there is much work left to do.



Jo-Anne Dusel

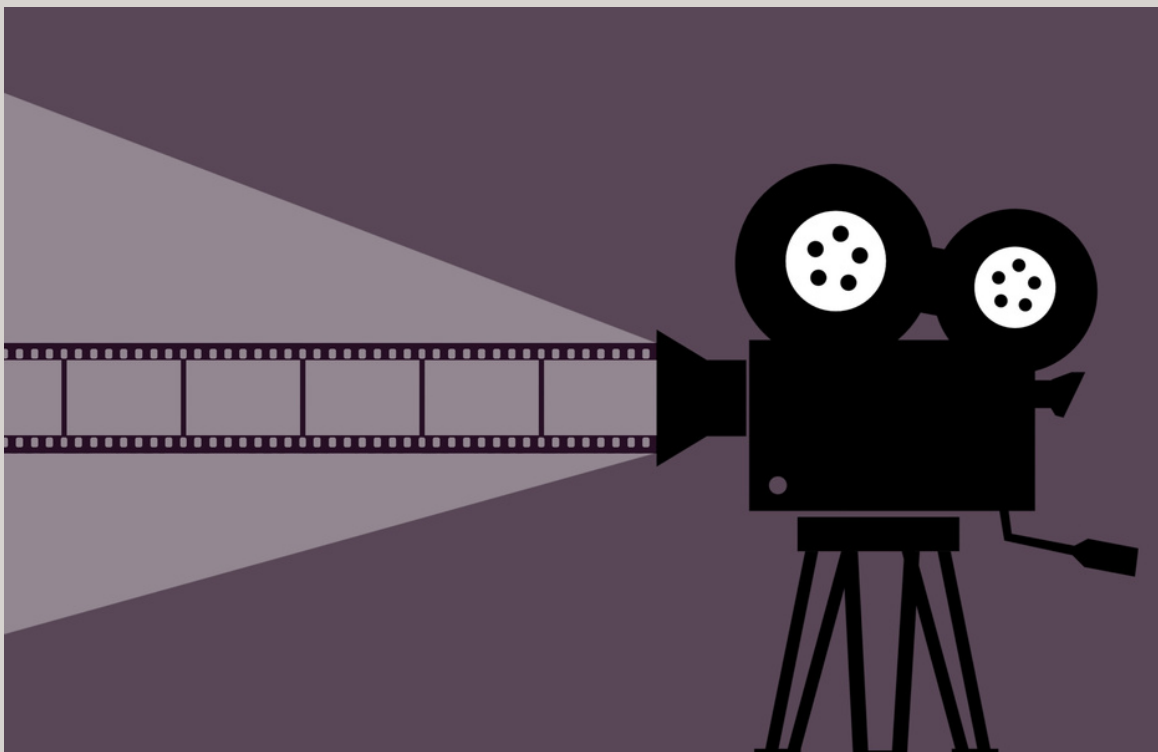
PATHS' Work

Resources for Men's Groups

Three Short Videos Project – *Indigenous Men Share Stories: Promoting Indigenous Approaches to Violence Prevention*

The Saskatchewan Health Research Foundation (SHRF) has funded this project aimed at advancing reconciliation in Saskatchewan. PATHS is partnering with RESOLVE Saskatchewan and the Peter Ballantyne Cree Nation (PBCN) Health Centre to create video resources to be used in men's violence prevention groups.

PBCN Health Centre staff have taken the lead role in developing content, writing scenarios and translating video footage including Elder's stories from Cree to English and English to Cree. RESOLVE has taken charge of overall organization of the project and filming of the video clips. PATHS' staff have been acting in a supporting role and will work with RESOLVE on the teaching guide that will accompany the videos. These videos will serve as a vital resource for First Nations and Métis communities that may otherwise have limited internet access.



PATHS' Work Public Awareness Campaigns



As part of a Prairie Action Foundation funded project, bus ads featuring the "You Are Not Alone" message in multiple languages rolled through Saskatoon, Regina and Moose Jaw in fall of 2021.

Funding provided by the government of Canada and distributed by the Canadian Women's Foundation allowed us to create and air a series of radio ads. The first round of public awareness messages that were developed by Rawlco radio in early 2021 were translated into Cree, Dene and Michif for play on Missinipi Broadcasting across the province. MBC also aired the English versions and developed one new ad "No Joke" to combat a tendency by some to view IPV as a laughing matter. You can listen the public awareness messages here (<https://pathssk.org/news/page/3/>)



PATHS' Work Training for IPV Professionals

Like many other sectors, domestic violence shelters and services have been experiencing human resource challenges. Under the additional pressures of the pandemic, including additional screening, maintaining public health measures and supporting clients in new ways, the time required for training new staff was becoming burdensome. As a result, PATHS sought out funding to develop online training for IPV professionals which will be accessible to our member agencies at no cost. This will help to ensure a consistent standard of practice across the province, as well as reduce the burden on our PATHS member agencies related to training for new staff members. Our online, self-paced course for IPV professionals launched in December 2021.

The course includes the following modules: Introduction to PATHS, Philosophical Underpinnings, About IPV, Children Who are Exposed to Violence, Working with Diverse Individuals, Trauma-and-Violence-Informed Practice, Barrier Reduction, Professional Skills, Self-Care, and Legislation to Support Survivors. Each of these modules are interactive, providing a mixture of text, clickable graphics and videos. We worked with a small committee of our members to develop the topics and review each module as it was completed. A certificate is issued on completion of the course. Evaluation of the training by learners has been positive.



PATHS' Work

Social Enterprise



In June 2021, PATHS completed a business plan in conjunction with Praxis Consulting to guide our intimate partner and family violence focused fee-for-service training programs. Praxis conducted an environmental scan and focus groups with professionals from the legal, human resources, education and healthcare sectors and worked with PATHS to determine our capacity and goals moving forward. They developed marketing and communication strategies and proposed a three-stage model for business growth. This plan is being used to guide PATHS to greater organizational sustainability and reduce reliance on project-based grant funding. PATHS currently offers training in the Make it Our Business program, certification in the Ontario Domestic Assault Risk Assessment (ODARA) and Understanding the Dynamics of Domestic Violence for Family Law Professionals training. Thanks to funding from the government of Saskatchewan we are currently developing self-directed online training for public and private sector organizations to promote An Effective Response to IPV in the Workplace. In the fiscal year, 2021 - 2022, PATHS received \$30,172 in income from fee-for-service training and will retain \$27,834 to be used for operations or placed in reserve for future years. This social enterprise allows us to fulfill our key mandates of providing education and training for our members and increasing public awareness of issues surrounding IPV.



PATHS' Work

Working to End Violence

PATHS partnership with the Saskatchewan SPCA and STOPS to Violence has made significant strides in recent years in furthering research on The Link (HOME | violencelink.ca) between animal abuse and intimate partner and family violence. For many years, we have been aware that victims of abuse who are also animal owners may delay leaving or choose not to leave an abusive partner if they are not able to take their companion animals with them. This creates a barrier to safety for both the survivor and their pets. A joint goal of the Working to End Violence partnership is supporting shelters in Saskatchewan to become more pet-friendly. Support from The Community Initiatives Fund, as well as funding from the Rogers Family, allowed us to contract Praxis Consulting to develop a viability report for pet-friendly shelters in Saskatchewan. This report was highlighted at a joint presentation by PATHS' and Saskatchewan SPCA's staff at Humane Canada's Link Conference in November, 2021. A series of webinars have been presented that illuminate The Link, including presentations on research conducted by PATHS and from Allie Phillips, the founder of the Sheltering Animals and Families Together Program (Pet-Friendly Domestic Violence Shelters - SAF-T Program (saftprogram.org)). We have jointly established a community of practice, the Saskatchewan Co-Sheltering Network, for shelters and services in Saskatchewan and beyond who are interested in supporting survivors with pets. Collectively, we have begun to fundraise for pet care kits for shelters that include crates, beds, leashes and other necessities for cat and dogs. These are being distributed to PATHS member agencies on request.



PATHS' Work

Research

Director of Research and Communications, Crystal Giesbrecht was lead author on four journal articles published in the fiscal year 2021 - 2022

Giesbrecht, C. J., Jamshidi, L., LaVallie, C., Sasakamoose, J. & Carleton, R. N. (2021). **Assessing the efficacy of a cultural and artistic intervention for Indigenous women who have experienced intimate partner violence.** *Violence Against Women*. Article first published online: December 6, 2021. <https://doi.org/10.1177/10778012211058220>

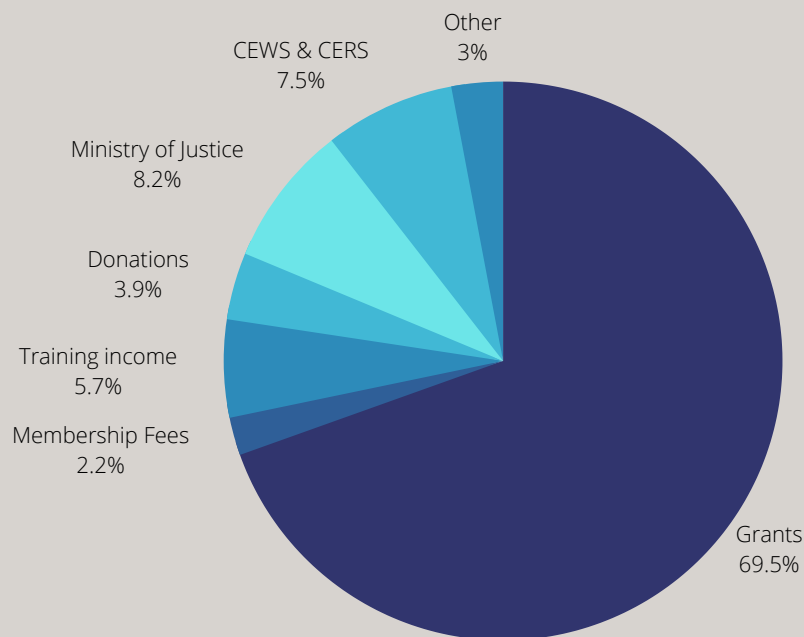
Giesbrecht, C. J. (2021). **Intimate partner violence, animal maltreatment, and animal safekeeping: Findings from a public survey.** *Journal of Interpersonal Violence*. Article first published online: November 21, 2021. <https://doi.org/10.1177/08862605211056899>

Giesbrecht, C. J. (2021). **Intimate partner violence, animal maltreatment, and concern for animal safekeeping: A survey of survivors who owned pets and livestock.** *Violence Against Women*. Article first published online: October 14, 2021. <https://doi.org/10.1177/10778012211034215>

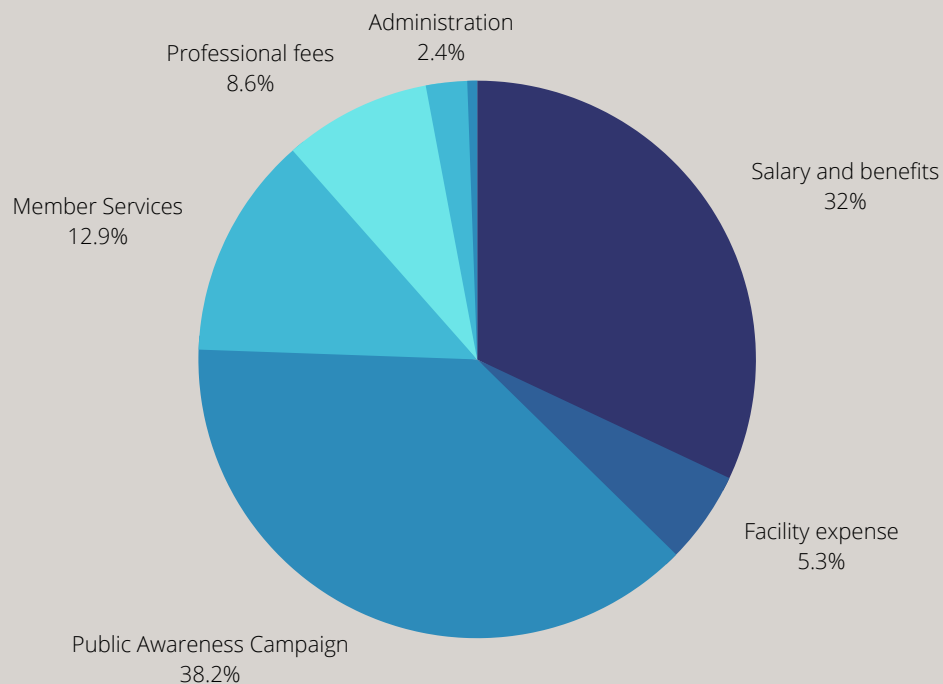
Giesbrecht, C. J. (2021). **Animal safekeeping in situations of intimate partner violence: Experiences of human service and animal welfare professionals.** *Journal of Interpersonal Violence*. Article first published online: June 17, 2021. <https://doi.org/10.1177/08862605211025037>



Statement of Operations 2021 - 2022



Total revenue: \$511,440



Total expenses: \$454,566

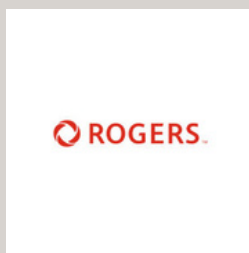
Surplus for fiscal year: \$56,566

Term deposits and investments: \$121,068

Unrestricted cash on hand: \$154,783

Funders

- Government of Canada
- Public Health Agency of Canada
- Canadian Women's Foundation
- Prairie Action Foundation
- Saskatchewan Health Research Foundation
- G. Murray and Edna Forbes at the South Saskatchewan Community Foundation
- Rogers Family



Thank you!



Donors

- Oneiro Designs,
- Doug & Jackie Shaw
- Lisa Guenther
- Daphne & Phil Walsh
- Canada Employment and Immigration Union (CEIU) Manitoba Saskatchewan Regional Committee
- CanadaHelps Partner Giving Program
- Pattison Outdoor Advertising



